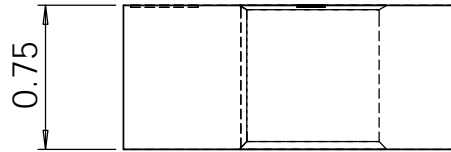
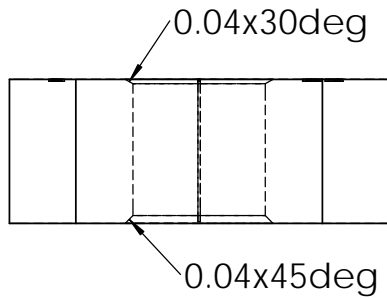
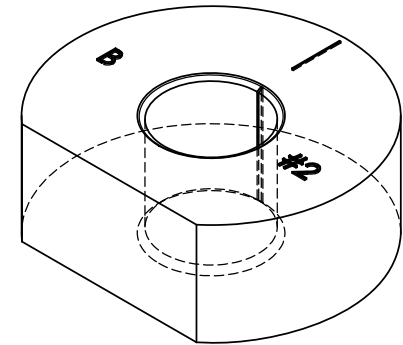
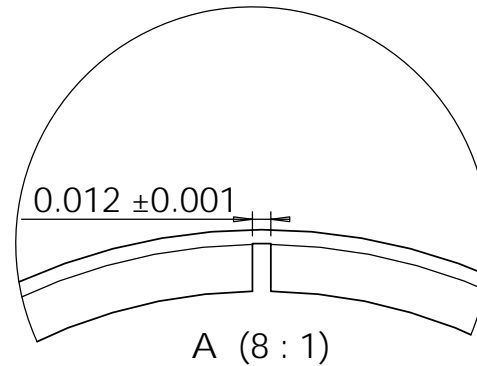
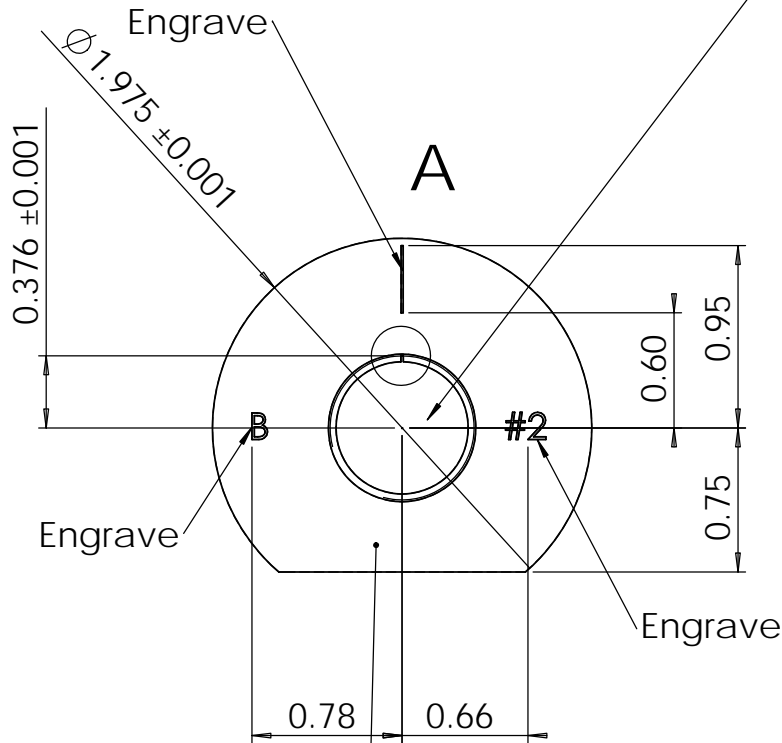


REVISIONS				
ZONE	REV.	DESCRIPTION	DATE	APPROVED
	B	Added label and chamfer note	5/26/05	AO
	C	Modified tapped hole callout	12/4/05	AO
	D	Added note to engrave serial number	11/30/06	AO
	E	Set OD to 1.975", set tolerance on OD and notch width	5/21/07	AO
	F	Reduced tol. on minor diameter, old part # VP-3003	9/14/07	AO
	G	Added chamfer callout, old part # VPCALSTD-2	11/18/09	AO
	H	Updated material callout from AL 6061 to AL6061-T651	9/14/16	AO



SINGLE POINT TURN ID AND THREAD!

Tap 0.750-16UNF-2B
 Minor Dia: 0.689+/-0.001
 Pitch Dia: 0.7094-0.7114
 Major Dia: 0.750 MINIMUM



Engrave Serial #

PROPRIETARY AND CONFIDENTIAL
 THE INFORMATION CONTAINED IN THIS DRAWING IS THE SOLE PROPERTY OF SARYNA TECHNOLOGIES LLC. ANY REPRODUCTION IN PART OR AS A WHOLE WITHOUT THE WRITTEN PERMISSION OF SARYNA TECHNOLOGIES LLC IS PROHIBITED.

		DIMENSIONS ARE IN INCHES TOLERANCES: FRACTIONAL ±1/32 ANGULAR: MACH ± BEND ± TWO PLACE DECIMAL ±0.02 THREE PLACE DECIMAL ±0.003		NAME AO	DATE 4/10/05	Saryna Technologies LLC	
		MATERIAL AL6061-T6511		CHECKED		VP Calibration Standard SCBA #2/Paintball 0.750"	
		FINISH Anodize, Type 2, Black		ENG APPR.		SIZE A	
NEXT ASSY		USED ON		MFG APPR.		DWG. NO. VPP-108-2	
APPLICATION		DO NOT SCALE DRAWING		Q.A.		REV. H	
				COMMENTS: BREAK ALL EXTERNAL SHARP EDGES UNLESS NOTED. ENGRAVING FONT IS NOT IMPORANT. USE 1/16" BALL END MILL, 0.01" DEEP OR LASER ENGRAVE.		SCALE:1:1	
						WEIGHT:	
						SHEET 1 OF 1	